

Japanese Imagawayaki Specifications

Ingredients: Red beans paste (water, sugar, dried red beans, salt), wrap (wheat flour, sugar, fructose, rapeseed oil, egg, sodium bicarbonate, glucono delta-lactone, monosodium phosphate, monocalcium phosphate, potassium acid tartrate, dicalcium phosphate, honey, salt, oil powder (vegetable oil, corn syrup), propylene glycol esters of fatty acids, mono- and diglycerides of fatty acids, soy lecithin, sodium caseinate).

Country of Origin: Product of Japan

Features: A traditional Japanese snack with a crispy exterior and a soft, chewy interior. The sweet bean paste filling adds a touch of sweetness.

Calories: 180 per serving

Sodium: 170 mg.

Carbs: 37 g.

Protein: 4 g.

Shelf life: 18 months

Storage Condition: Keep at 0°F (-18°C) until ready to use

Pack Style: 80 g. per piece x 10 pieces per bag, 8 bags per case

Unit Dimensions L x W x H (in.): 5.9 x 6.9 x 2.8

Case Dimensions L x W x H (in.): 11.8 x 13.4 x 6.4

Gross Case Weight: 15 lbs.

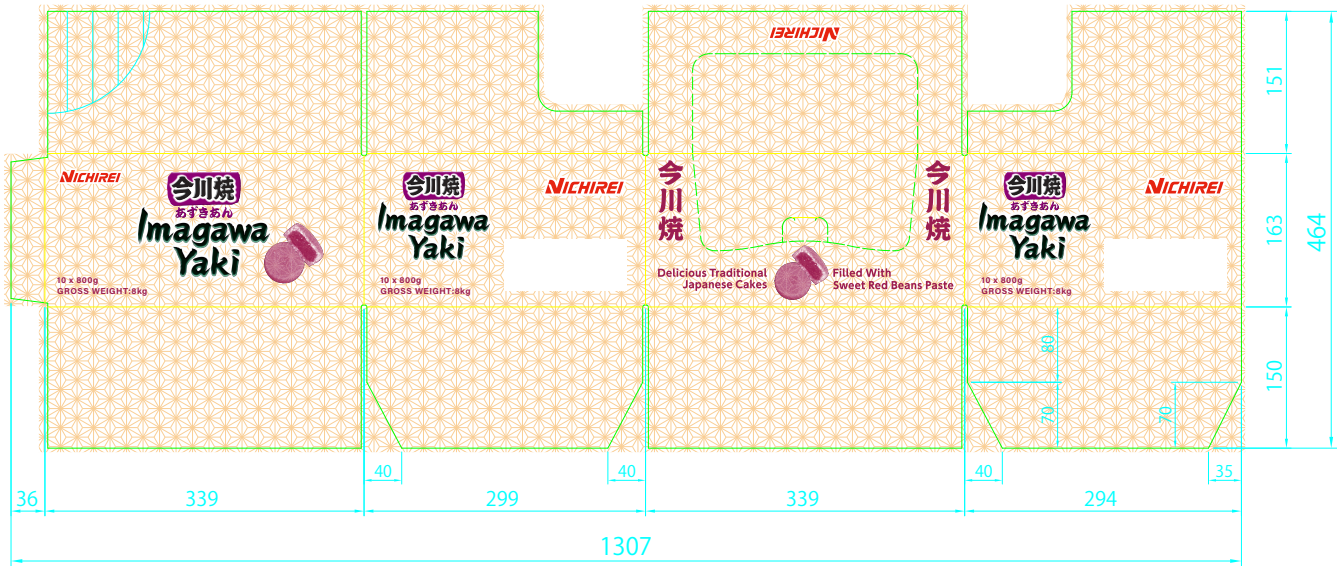
Net Case Weight: 14.13 lbs.

Is the case clampable? No

Minimum Commitment Quantity: Tentative 5800 cs

Initial Lead Time (from commitment to first delivery): 6 months





Noon International LLC
www.noon-intl.com
sales@noon-intl.com
 +1 (206) 283-8400
 5506 6th Avenue South, Suite 101, Seattle, WA 98108



